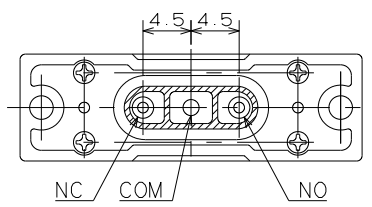
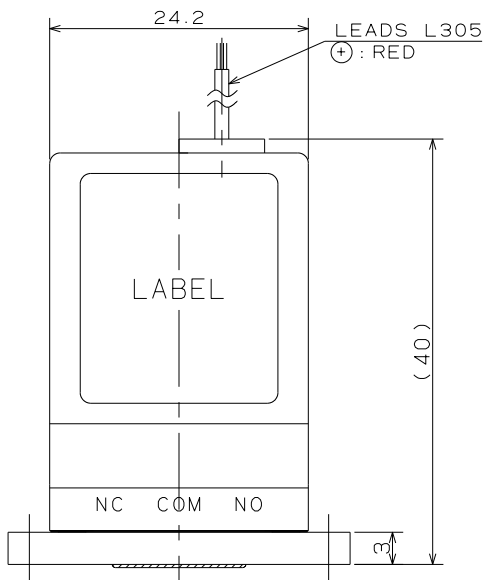
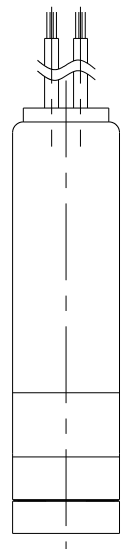
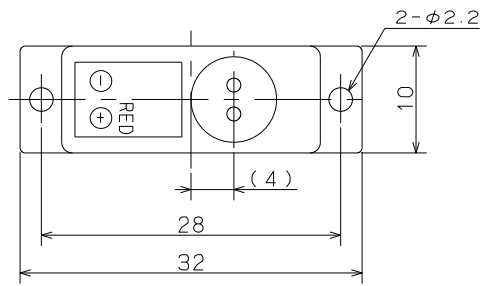


FOR REFERENCE ONLY

SOLENOID VALVE

SPECIFICATIONS for MODEL RVC-3K-MFF

- ORIFICE DIAMETER : 1mm
- PORT CONNECTION : PACKING SEAL
- OPERATING PRESSURE RANGE : COM. NC. NO -50 ~ 100kPa
{-375mmHg ~ 1bar}
- FLUID MEDIA : FLUIDS CHEMICALLY COMPATIBLE WITH MATERIALS BELOW
- MEDIA TEMPERATURE RANGE : 5 ~ 50°C
- AMBIENT TEMPERATURE RANGE : 5 ~ 50°C
- RATED VOLTAGE : 12VDC, 24VDC
- POWER CONSUMPTION : INRUSH 4.2W(12VDC), 3.6W(24VDC)
HOLDING 1W(12VDC, 24VDC)
INRUSH TIME 50ms
- DUTY CYCLE : CONTINUOUS
- INSULATION CLASS : CLASS B



WETTED MATERIALS

△							
△			3	DIAPHRAMG	FPM	1	
△			2	BODY	PEEK	1	
SYM.	DATE	DESCRIPTION	1	PACKING SEAL	FPM	1	
REVISION			PART NO.	PART NAME	MATERIAL	REQD.	NOTE
SCALE	APPROVED	CHECKED	DRAWN		DRAWING NO		
2/1		A. Toda	Solenoid Valve		15100-00-S		
A 3			RVC-3K-MFF				